

Phone : +(242) 05 377 95 54
+(242) 05 377 95 64
AFTN : FCCCYNXX
E-mail : bnibrazza@yahoo.fr
aim-fccc@asecna.org
Web : https://aim.asecna.aero



**BUREAU NOTAM INTERNATIONAL
DE L'AFRIQUE CENTRALE**

B.P. 660 BRAZZAVILLE - CONGO

AIRAC AIP SUP

NR 43/B/26FC

11 JUN 2026

CAMEROUN – CENTRAFRIQUE – CONGO – GABON – GUINEE ÉQUATORIALE – SAO TOME – TCHAD

**KOULAMOUTOU/Jean Stanislas MIGOLET DE
MABIMBI- FOGK**

MISE A JOUR DES PROCEDURES DE VOL IFR
IFR FLIGHT PROCEDURES UPDATE

Effective date	09 JUL 2026
Validity	PERM

Ce SUP d'AIP informe les usagers sur la mise à jour des procédures de vol IFR de l'aérodrome de KOULAMOUTOU/ Jean Stanislas MIGOLET DE MABIMBI

This AIP SUP informs users of the update of IFR flight procedures at KOULAMOUTOU/ Jean Stanislas MIGOLET DE MABIMBI aerodrome

ASECNA AIP MODIFY PAGES

07AD2-FOGK-IAC-RNP15
07AD2-FOGK-IAC-RNP15-DATA
07AD2-FOGK-IAC-RNP33
07AD2-FOGK-IAC-RNP33-DATA

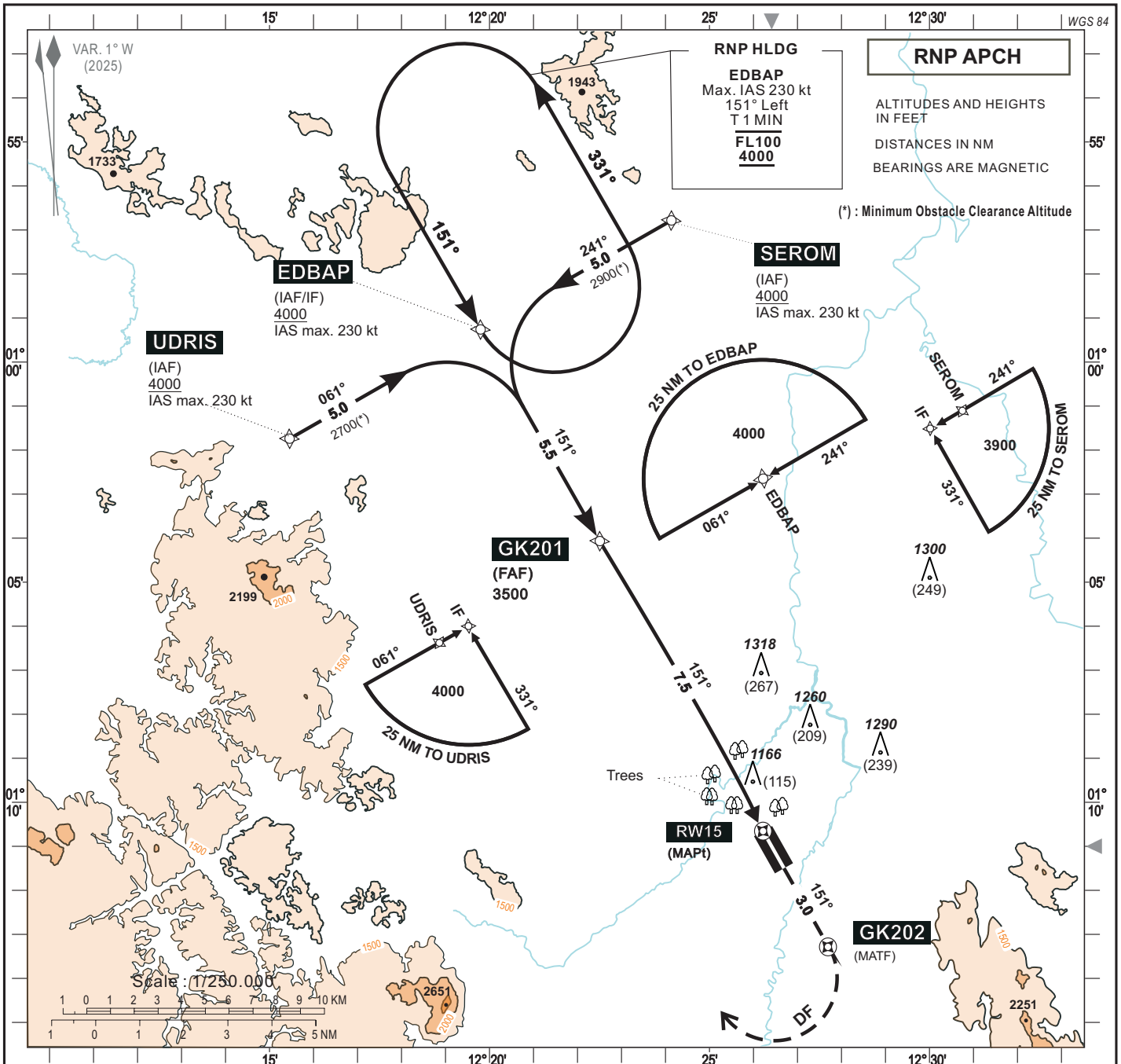
***CE SUP AIP COMPORTE 01 PAGE ET 04 ANNEXES /
THIS AIP SUP HAS 01 PAGE AND 04 ANNEXES***

**INSTRUMENT
APPROACH CHART**
Categories A-B-C-D

AERODROME ELEV : 1051
THR RWY 15 ELEV : 1051
HEIGHTS RELATED TO THR 15 ELEVATION

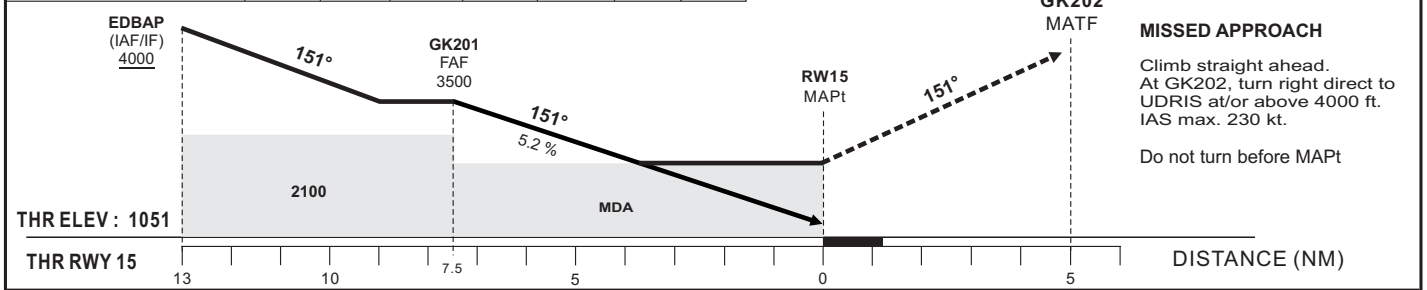
AFIS : KOULAMOUTOU INFORMATION 122.75

**KOULAMOUTOU / Jean Stanislas MIGOLET
DE MABIMBI (FOGK)**
RNP RWY 15



Distance to THR 15 (NM)	FAF	7	6	5	4	3	RW15
Altitude (ft)	3500	3330	3015	2695	2375	2060	

TRANSITION ALTITUDE : 6000



CORRECTIONS: AD Name	LNAV					CIRCLING (1)				
	OCA	OCH	MDA	MDH	RVR	OCA	OCH	MDA	MDH	VIS
A					1500	1867 (816)		1870 (820)		1500
B					1500	1900 (849)		1900 (850)		1600
C	1786 (735)		1790 (740)		2000	2573 (1522)		2580 (1530)		2400
D					2000	2573 (1522)		2580 (1530)		3600

Notes: (1) Daytime only. OCH and MDH AAL
RVR AND VIS IN METERS
TCH : 15 m

**Timing : FAF/THR
7.5 NM**

KT	MIN	SEC	KT	MIN	SEC
90	5	00	140	3	13
100	4	30	150	3	00
110	4	05	160	2	49
120	3	45	170	2	39
130	3	28	180	2	30

TABULAR DESCRIPTION

RNP RWY 15											
Serial Number	Path Descriptor	Waypoint Identifier	Fly-Over	Course °M(°T)	Magnetic Variation	Distance (NM)	Turn Direction	Altitude (ft)	Speed limit (Kt)	VPA/TCH (°/m)	Navigation Specification
10	IF	UDRIS	-	-	-	-	-	+4000	-230	-	RNP APCH
20	TF	EDBAP	-	061 (060.4)	-	5.0	-	+4000	-230	-	RNP APCH
10	IF	SEROM	-	-	-	-	-	+4000	-230	-	RNP APCH
20	TF	EDBAP	-	241 (240.4)	-	5.0	-	+4000	-230	-	RNP APCH
10	IF	EDBAP	-	-	-	-	-	+4000	-230	-	RNP APCH
20	TF	GK201	-	151 (150.4)	-	5.5	-	@3500	-	-	RNP APCH
30	TF	RW15	Y	151 (150.4)	+1	7.5	-	@1101	-	-3.0/15	RNP APCH
40	CF	GK202	Y	151 (150.4)	-	-	-	-	-230	-	RNP APCH
50	DF	UDRIS	-	-	-	-	R	+4000	-230	-	RNP APCH
10	IF	EDBAP	-	-	-	-	-	+4000	-230	-	RNP APCH
20	HM	EDBAP	-	151 (150.4)	-	-	L	+4000	-230	-	RNP APCH

WAYPOINTS LIST

RNP RWY 15		
Waypoint Identifier	Latitude	Longitude
GK201	01°04'04.177"S	012°22'30.239"E
GK202	01°13'16.609"S	012°27'41.787"E
SEROM	00°56'46.949"S	012°24'08.075"E
UDRIS	01°01'44.588"S	012°15'27.130"E
EDBAP	00°59'15.771"S	012°19'47.605"E
RW15	01°10'39.300"S	012°26'13.067"E

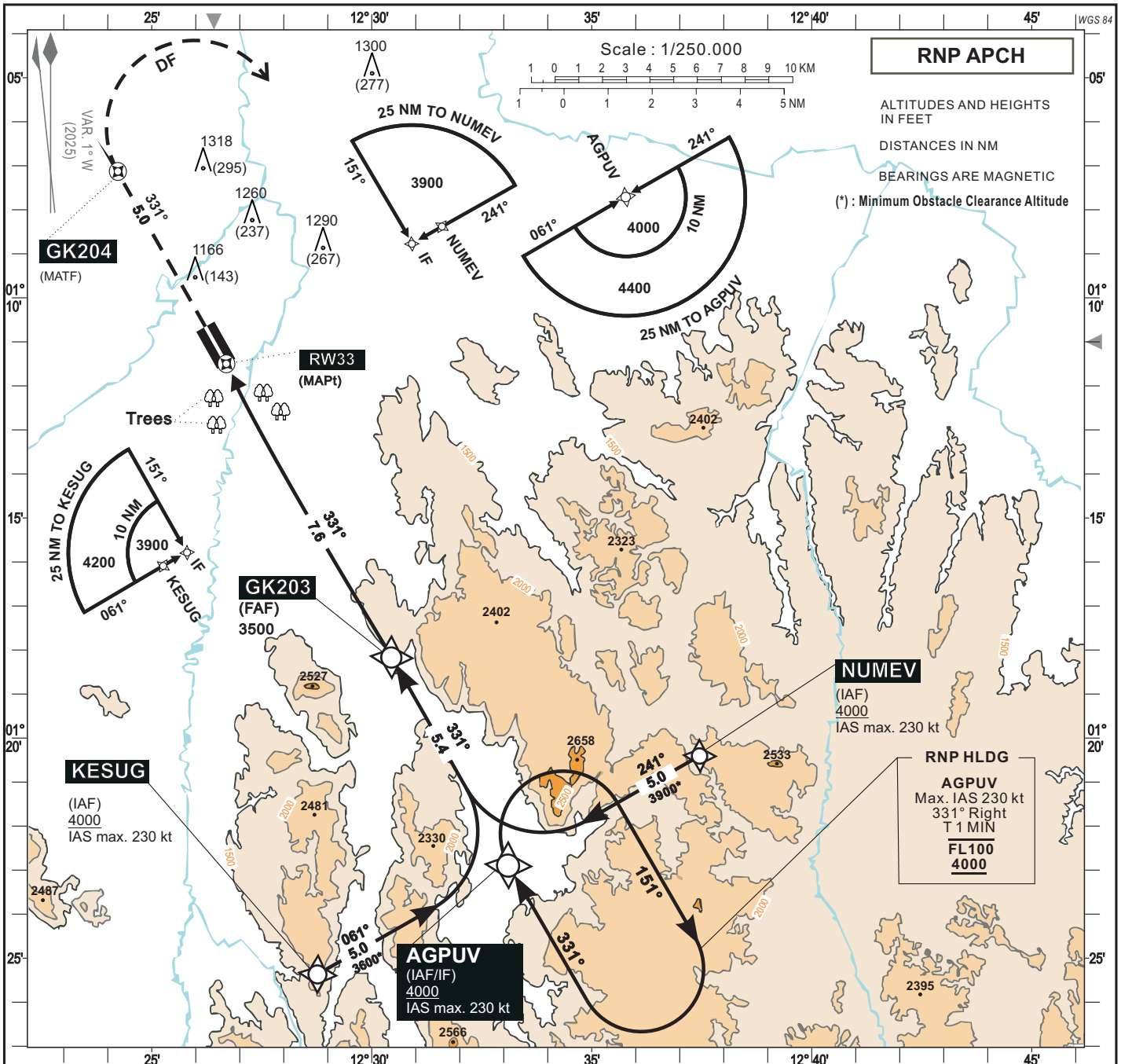
CORRECTIONS: AD Name

INSTRUMENT APPROACH CHART
Categories A-B-C-D

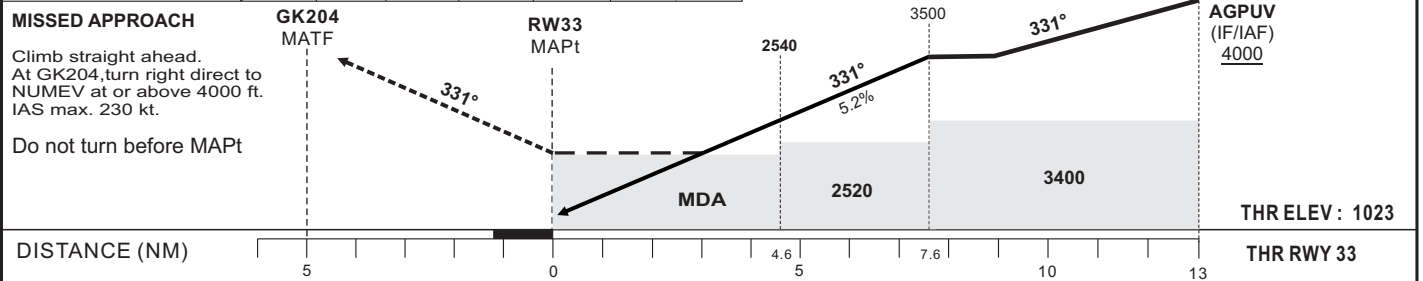
AERODROME ELEV : 1051
THR RWY 33 ELEV : 1023
HEIGHTS RELATED TO THR RWY 33 ELEVATION

AFIS : KOULAMOUTOU INFORMATION 122.75

KOULAMOUTOU / Jean Stanislas MIGOLET DE MABIMBI (FOGK)
RNP RWY 33



Distance to THR 33 (NM)	RW33	3	4	5	6	7	FAF
Altitude (ft)		2030	2350	2665	2985	3305	3500



CORRECTIONS: AD Name	LNAV		CIRCLING (1)				VIS	Timing : FAF/THR 7.6 NM										
	OCA	OCH	MDA	MDH	RVR	OCA			OCH	MDA	MDH							
A					1500	1867 (816)	1870 (820)	1500										
B	1798 (775)		1800 (780)		1500	1900 (849)	1900 (850)	1600										
C					2000	2573 (1522)	2580 (1530)	2400										
D					2000	2573 (1522)	2580 (1530)	3600										

Notes : (1) Daytime only. OCH and MDH AAL
RVR AND VIS IN METERS
TCH : 15 m

KT	MIN	SEC	KT	MIN	SEC
90	5	Min 04	140	3	Min 15
100	4	Min 34	150	3	Min 02
110	4	Min 09	160	2	Min 51
120	3	Min 48	170	2	Min 41
130	3	Min 30	180	2	Min 32

TABULAR DESCRIPTION

RNP RWY 33											
Serial Number	Path Descriptor	Waypoint Identifier	Fly-Over	Course °M(°T)	Magnetic Variation	Distance (NM)	Turn Direction	Altitude (ft)	Speed limit (Kt)	VPA/TCH (°/m)	Navigation Specification
10	IF	KESUG	-	-	-	-	-	+4000	-230	-	RNP APCH
20	TF	AGPUV	-	061 (060.4)	-	5.0	-	+4000	-230	-	RNP APCH
10	IF	NUMEV	-	-	-	-	-	+4000	-230	-	RNP APCH
20	TF	AGPUV	-	241 (240.4)	-	5.0	-	+4000	-230	-	RNP APCH
10	IF	AGPUV	-	-	-	-	-	+4000	-230	-	RNP APCH
20	TF	GK203	-	331 (330.4)	-	5.4	-	@3500	-	-	RNP APCH
30	TF	RW33	Y	331 (330.4)	+1	7.6	-	@1073	-	-3.0/15	RNP APCH
40	CF	GK204	Y	331 (330.4)	-	-	-	-	-230	-	RNP APCH
50	DF	NUMEV	-	-	-	-	R	+4000	-230	-	RNP APCH
10	IF	AGPUV	-	-	-	-	-	+4000	-230	-	RNP APCH
20	HM	AGPUV	-	331 (330.4)	-	-	R	+4000	-230	-	RNP APCH

WAYPOINTS LIST

RNP RWY 33		
Waypoint Identifier	Latitude	Longitude
GK203	01°18'09.791"S	012°30'27.145"E
GK204	01°07'07.769"S	012°24'13.773"E
KESUG	01°25'21.779"S	012°28'46.356"E
NUMEV	01°20'24.099"S	012°37'27.351"E
AGPUV	01°22'52.943"S	012°33'06.858"E
RW33	01°11'29.953"S	012°26'41.634"E

CORRECTIONS: AD Name